



# HORMAD1 Polyclonal Antibody

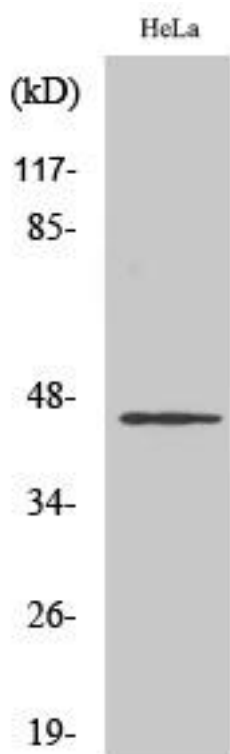
<b>Catalog No</b>	YP-Ab-00421
<b>Isotype</b>	IgG
<b>Reactivity</b>	Human;Rat;Mouse;
<b>Applications</b>	WB;ELISA
<b>Gene Name</b>	HORMAD1
<b>Protein Name</b>	HORMA domain-containing protein 1
<b>Immunogen</b>	The antiserum was produced against synthesized peptide derived from human HORMAD1. AA range:321-370
<b>Specificity</b>	HORMAD1 Polyclonal Antibody detects endogenous levels of HORMAD1 protein.
<b>Formulation</b>	Liquid in PBS containing 50% glycerol, 0.5% BSA and 0.02% sodium azide.
<b>Source</b>	Polyclonal, Rabbit,IgG
<b>Purification</b>	The antibody was affinity-purified from rabbit antiserum by affinity-chromatography using epitope-specific immunogen.
<b>Dilution</b>	Western Blot: 1/500 - 1/2000. ELISA: 1/10000. Not yet tested in other applications.
<b>Concentration</b>	1 mg/ml
<b>Purity</b>	≥90%
<b>Storage Stability</b>	-20°C/1 year
<b>Synonyms</b>	HORMAD1; NOHMA; HORMA domain-containing protein 1; Cancer/testis antigen 46; CT46; Newborn ovary HORMA protein
<b>Observed Band</b>	45kD
<b>Cell Pathway</b>	Nucleus . Chromosome . Preferentially localizes to unsynapsed or desynapsed chromosomal regions during the prophase I stage of meiosis. TRIP13 is required for depletion from synapsed chromosomes. The expression of the phosphorylated form at Ser-377 is restricted to unsynapsed chromosomal regions (By similarity).
<b>Tissue Specificity</b>	Testis-specific. Over-expressed in carcinomas.
<b>Function</b>	similarity:Contains 1 HORMA domain.,tissue specificity:Testis-specific. Over-expressed in carcinomas.,
<b>Background</b>	This gene encodes a HORMA domain-containing protein. HORMA domains are involved in chromatin binding and play a role in cell cycle regulation. The encoded protein may play a role in meiosis, and expression of this gene is a potential marker for cancer. A pseudogene of this gene is located on the long arm of chromosome 6. Alternatively spliced transcript variants encoding multiple isoforms have been observed for this gene. [provided by RefSeq, Dec 2010],
<b>matters needing attention</b>	Avoid repeated freezing and thawing!



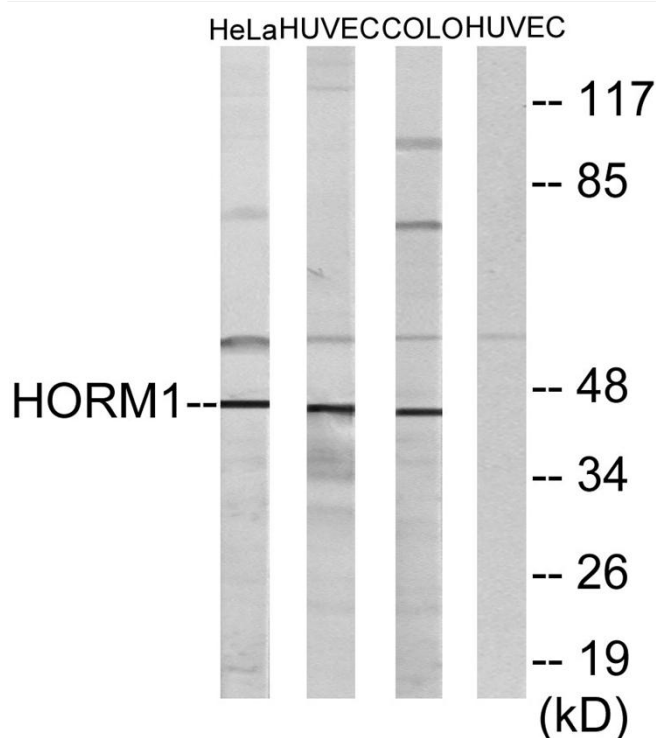
**Usage suggestions**

This product can be used in immunological reaction related experiments. For more information, please consult technical personnel.

**Products Images**



Western Blot analysis of various cells using HORMAD1 Polyclonal Antibody cells nucleus extracted by Minute TM Cytoplasmic and Nuclear Fractionation kit (SC-003, Inventbiotech, MN, USA).



Western blot analysis of lysates from HeLa, HUVEC, and COLO cells, using HORMAD1 Antibody. The lane on the right is blocked with the synthesized peptide.